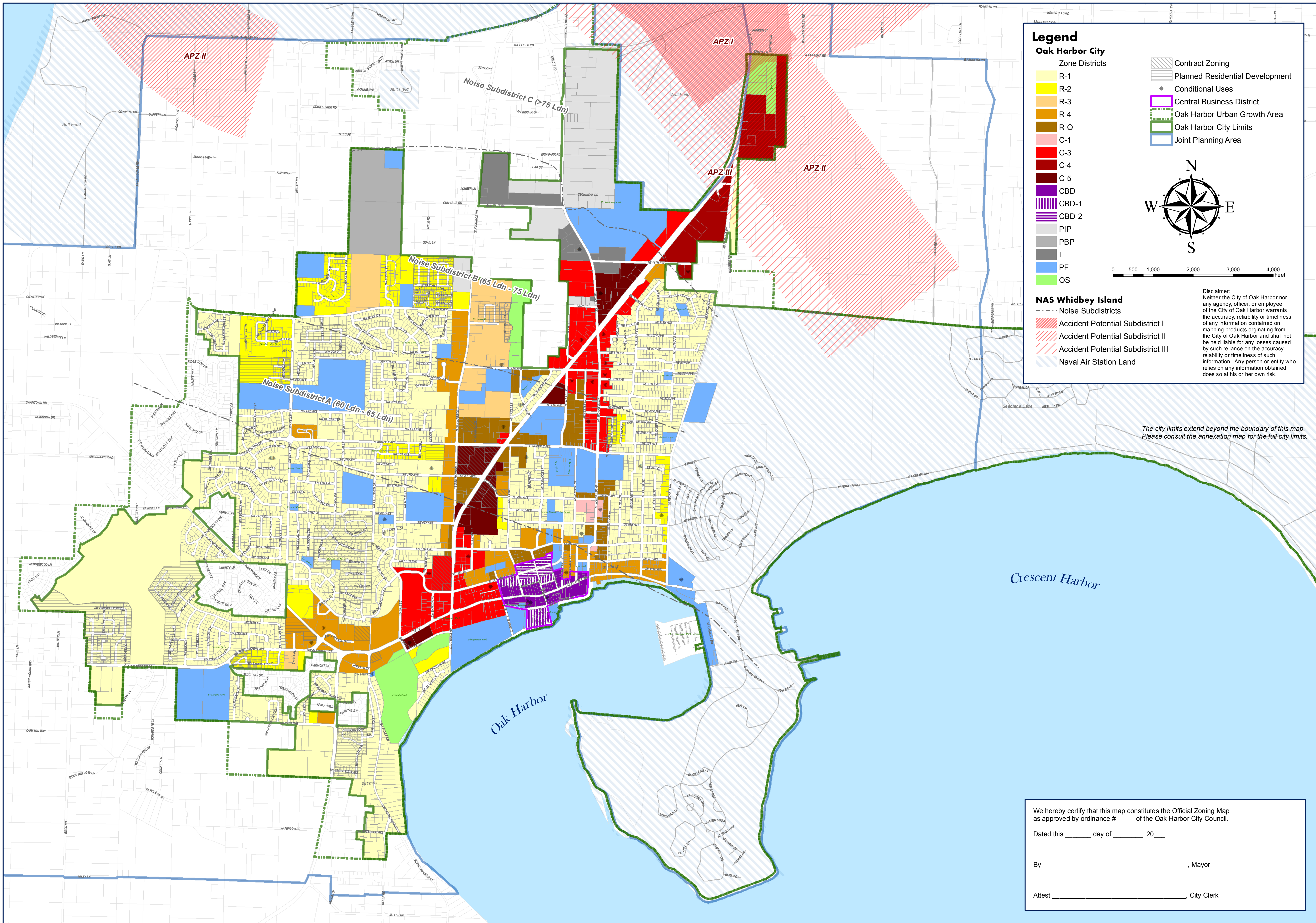


# Official Zoning Map



**Legend**

**Oak Harbor City**

**Zone Districts**

- R-1
- R-2
- R-3
- R-4
- R-O
- C-1
- C-3
- C-4
- C-5
- CBD
- CBD-1
- CBD-2
- PIP
- PBP
- I
- PF
- OS

**NAS Whidbey Island**

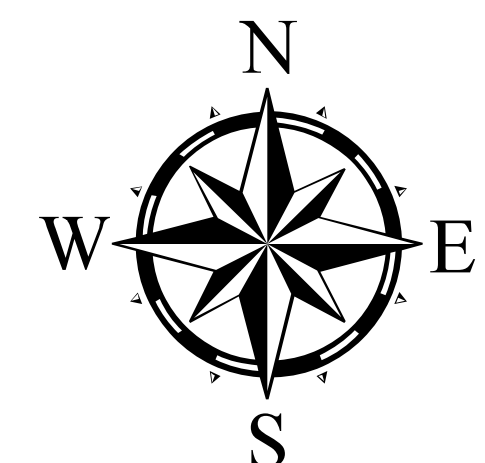
- Accident Potential Subdistrict I
- Accident Potential Subdistrict II
- Accident Potential Subdistrict III
- Naval Air Station Land

**Other Symbols:**

- Contract Zoning
- Planned Residential Development
- Conditional Uses
- Central Business District
- Oak Harbor Urban Growth Area
- Oak Harbor City Limits
- Joint Planning Area

**Scale:** 0 500 1,000 2,000 3,000 4,000 Feet

**Disclaimer:** Neither the City of Oak Harbor nor any agency, officer, or employee of the City of Oak Harbor warrants the accuracy, reliability or timeliness of any information contained on mapping products originating from the City of Oak Harbor and shall not be held liable for any losses caused by such reliance on the accuracy, reliability or timeliness of such information. Any person or entity who relies on any information obtained does so at his or her own risk.



The city limits extend beyond the boundary of this map. Please consult the annexation map for the full city limits.

We hereby certify that this map constitutes the Official Zoning Map as approved by ordinance # \_\_\_\_\_ of the Oak Harbor City Council.

Dated this \_\_\_\_\_ day of \_\_\_\_\_, 20\_\_

By \_\_\_\_\_, Mayor

Attest \_\_\_\_\_, City Clerk

